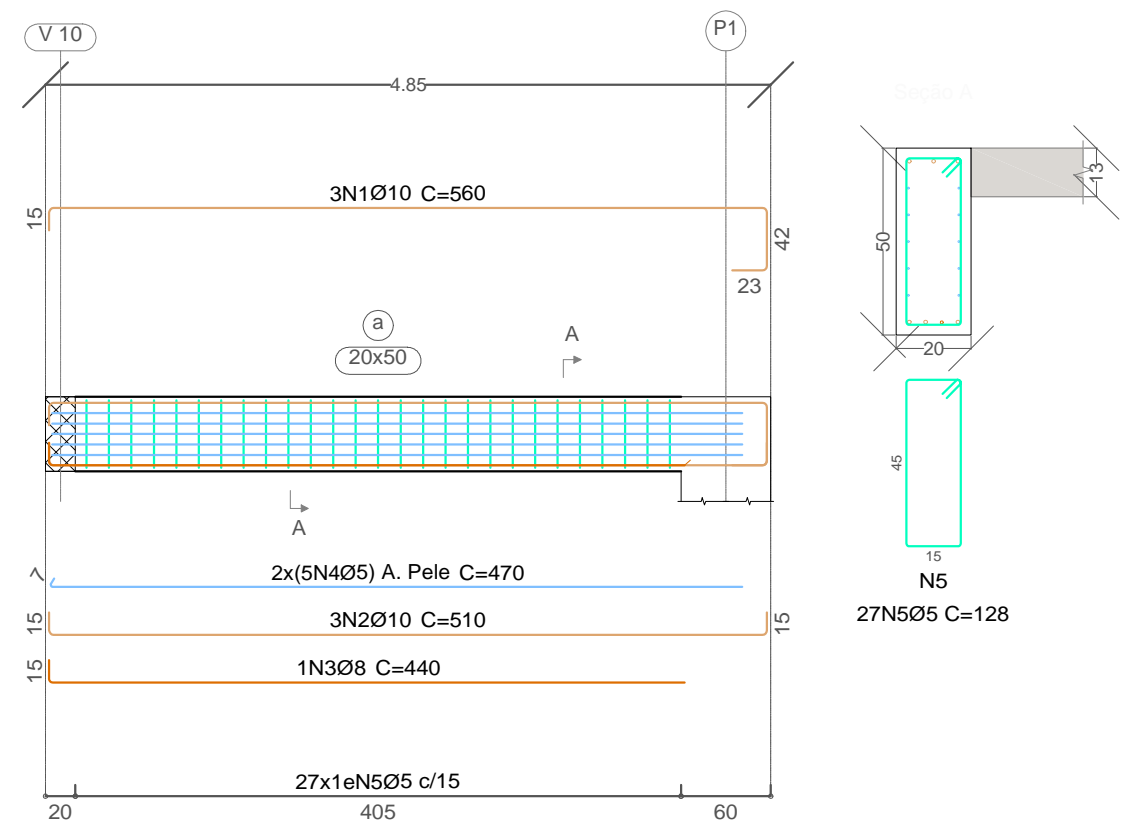


VIGAS COBERTURA 2

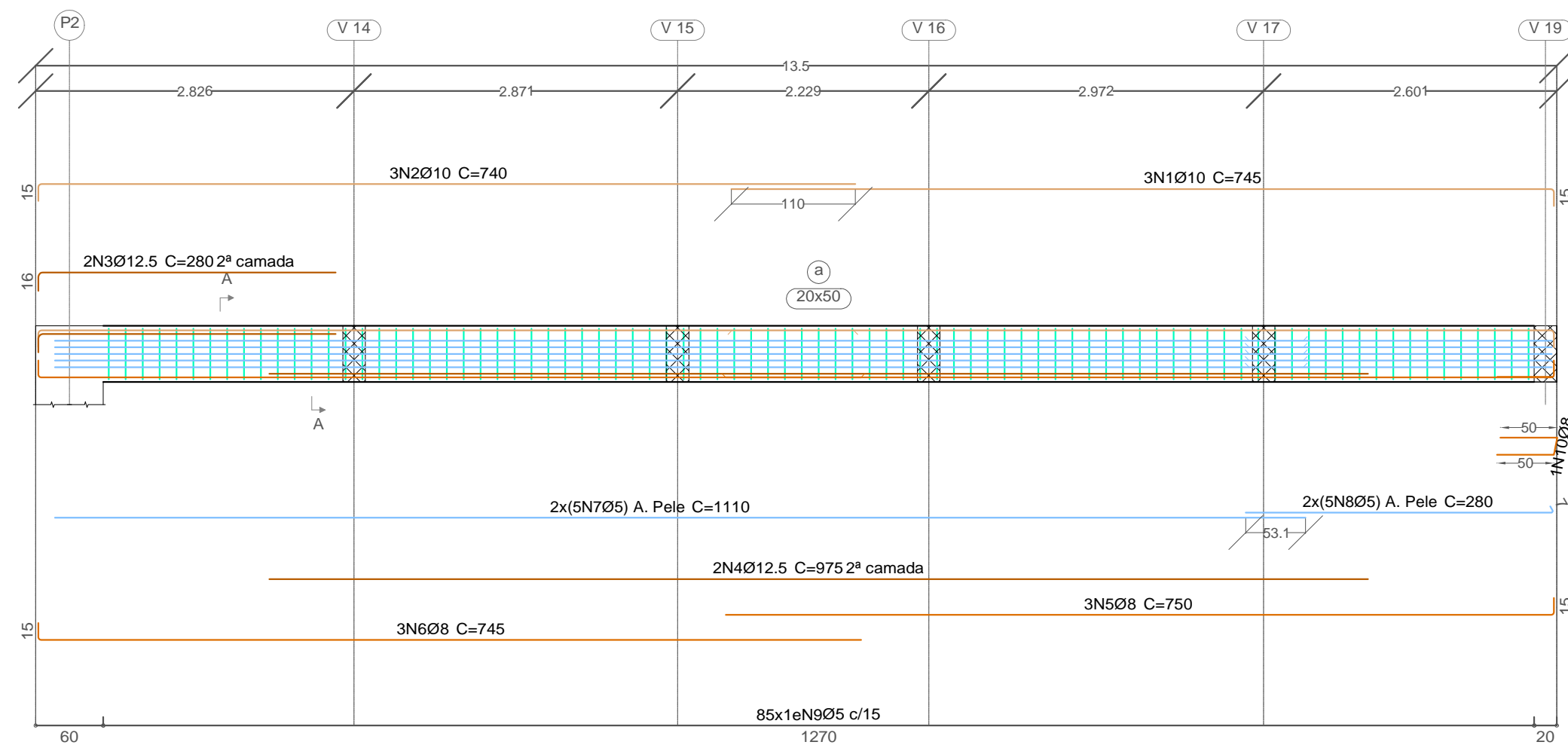
V 1

Escala vigas 1:50
Escala seções 1:20



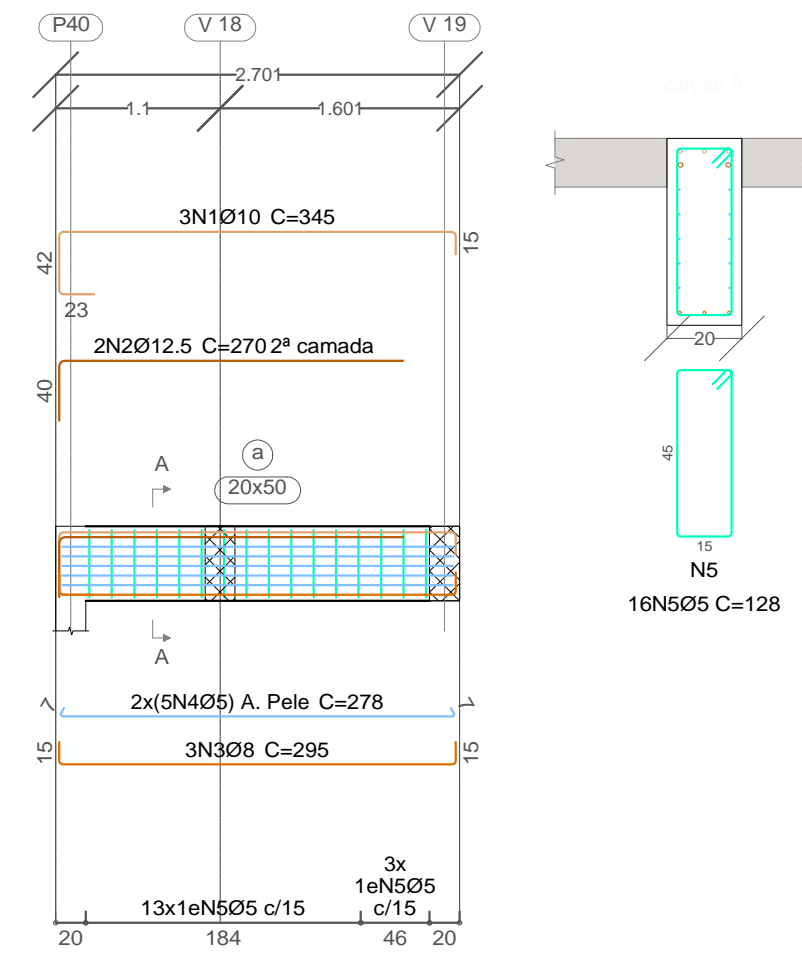
V 2

Escala vigas 1:50
Escala seções 1:20

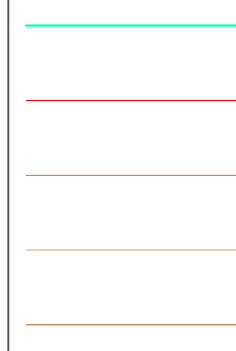


V 6

Escala vigas 1:50
Escala seções 1:20

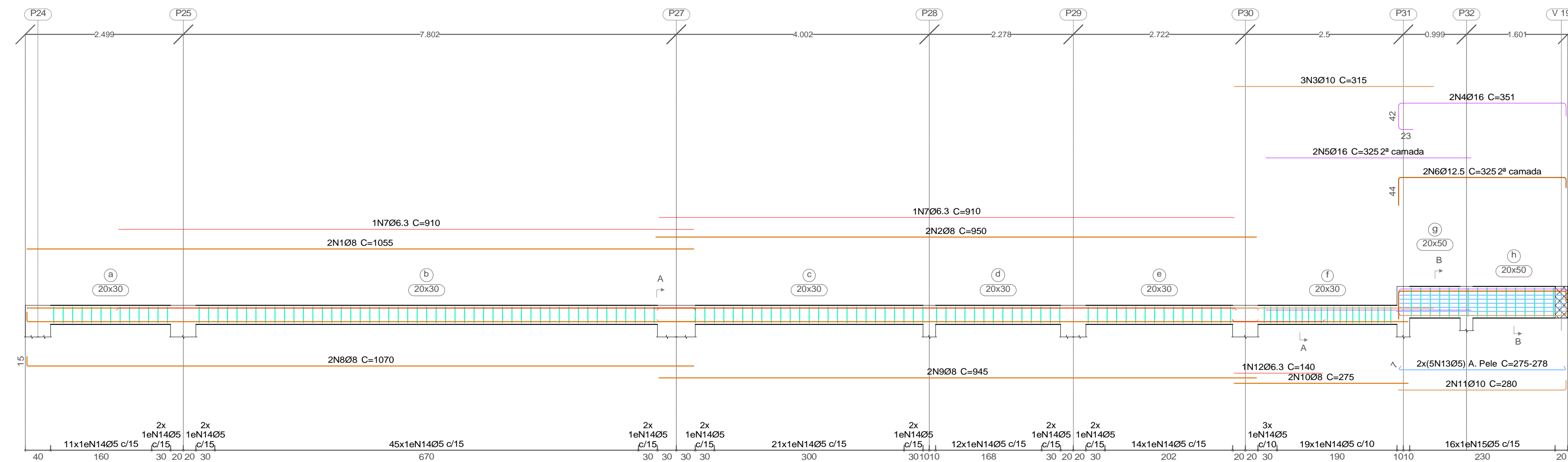


LEGENDA



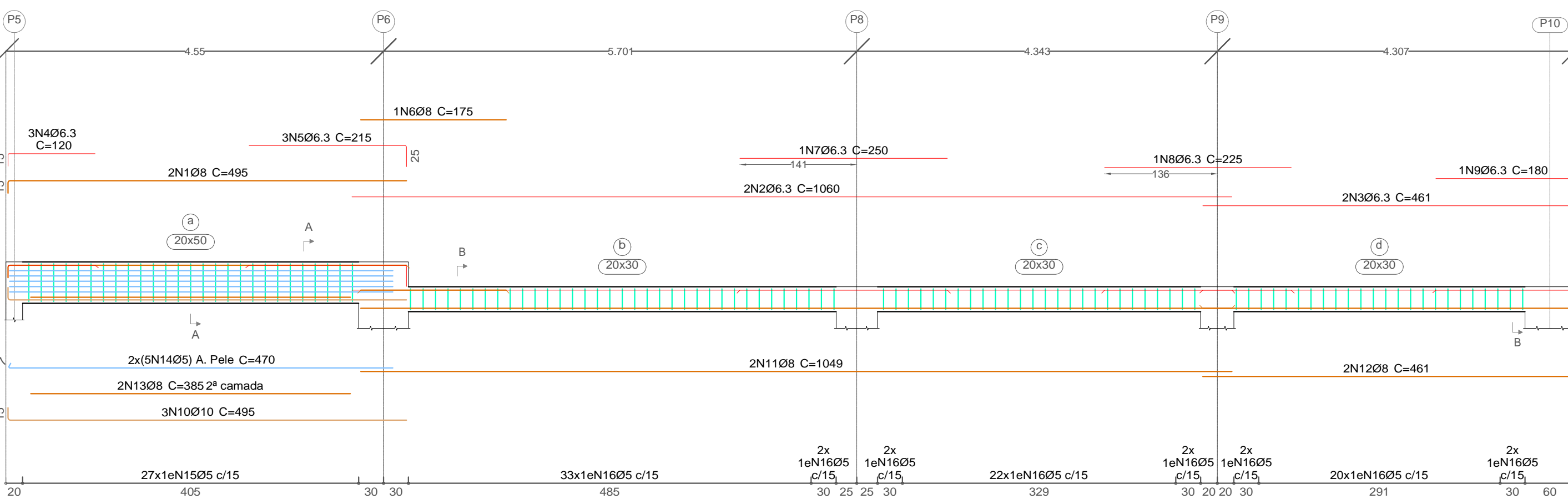
V 5

Escala vigas 1:50
Escala seções 1:20



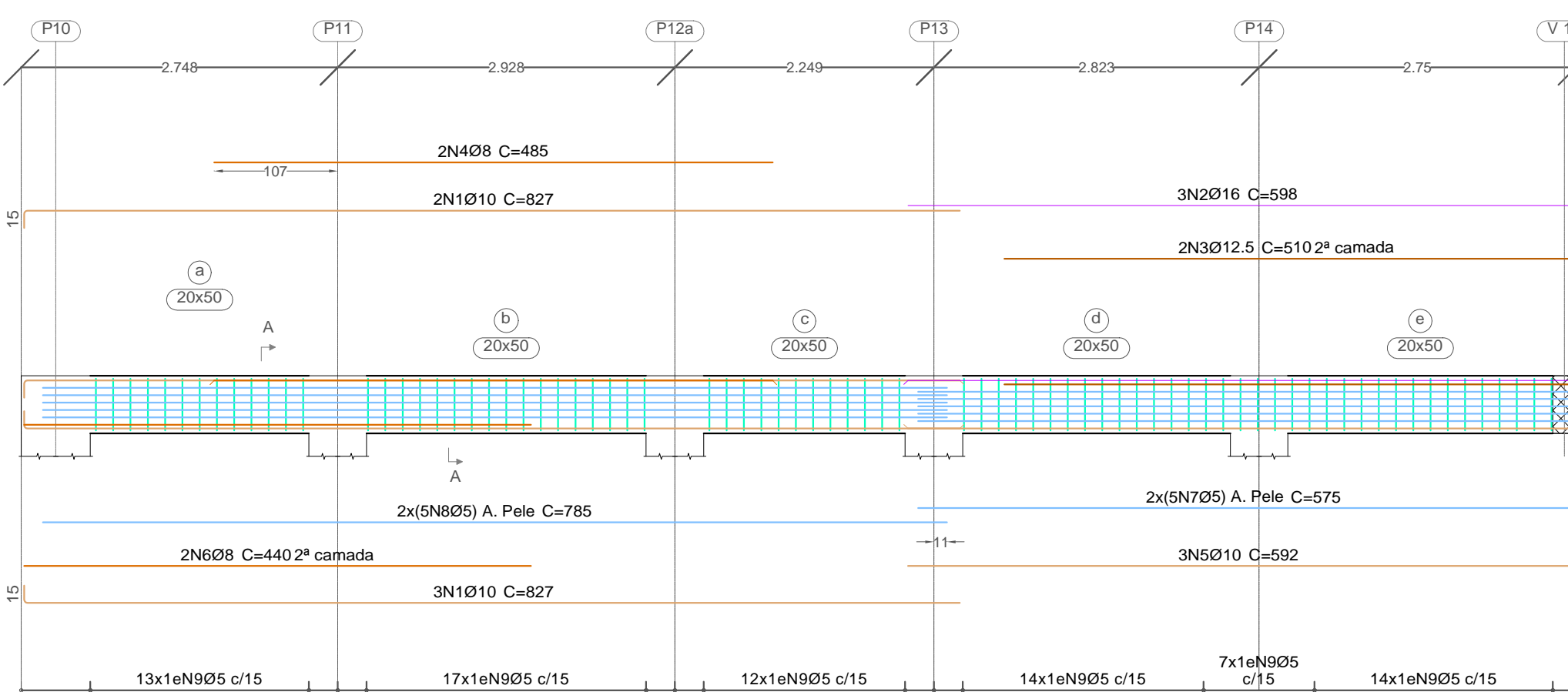
V 3

Escala vigas 1:50
Escala seções 1:20



V 4

Escala vigas 1:50
Escala seções 1:20



Elemento	Pos.	Diam.	Q.	Dob. (cm)	Reta (cm)	Dob. (cm)	Comp. (cm)	Total (cm)	CA-50 (kg)	CA-60 (kg)
V 1	1	Ø10	3	15	480	65	560	1680	10.4	
	2	Ø10	3	15	480	15	510	1530	9.4	
	3	Ø8	1	15	425		440	440	1.7	
	4	Ø5	10	6.5	463.5		470	4700		7.4
	5	Ø5	27	5	118	5	128	3456		5.4
Total+10%:									23.7	14.1
V 2	1	Ø10	3	15	725		745	2235	13.8	
	2	Ø10	3	15	725		740	2220	13.7	
	3	Ø12.5	2	16.3	263.8		280	560	5.4	
	4	Ø12.5	2	975			975	1950	18.8	
	5	Ø8	3	735	15		750	2250	8.9	
	6	Ø8	3	15	730		745	2235	8.8	
	7	Ø5	10	1110			1110	11100		17.4
	8	Ø5	10	273.5	6.5		280	2800		4.4
	9	Ø5	85	5	118	5	128	10880		17.1
	10	Ø8	1	115.9			116	116	0.5	
Total+10%:									76.9	42.8
V 3	1	Ø8	2	15	480		495	990	3.9	
	2	Ø6.3	2	1060			1060	2120	5.2	
	3	Ø6.3	2	445.7	15		461	922	2.3	
	4	Ø6.3	3	15	105		120	360	0.9	
	5	Ø6.3	3	189.6	25.4		215	645	1.6	
	6	Ø8	1	175			175	175	0.7	
	7	Ø6.3	1	250			250	250	0.6	
	8	Ø6.3	1	225			225	225	0.6	
	9	Ø6.3	1	165	15		180	180	0.4	
	10	Ø10	3	15	480		495	1485	9.2	
	11	Ø8	2	1049.4			1049	2098	8.3	
	12	Ø8	2	445.7	15		461	922	3.6	
	13	Ø8	2	385			385	770	3.0	
	14	Ø5	10	6.5	463.5		470	4700		7.4
	15	Ø5	27	5	118	5	128	3456		5.4
	16	Ø5	85	5	78	5	88	7480		11.7
Total+10%:									44.3	27.0
V 4	1	Ø10	5	15	812.5		827	4135	25.5	
	2	Ø6.3	3	577.3	20.8		598	1794	28.3	
	3	Ø12.5	2	493.8	16.3		510	1020	9.8	
	4	Ø8	2	485			485	970	3.8	
	5	Ø10	3	577.3	15		592	1776	10.9	
	6	Ø8	2	440			440	880	3.5	
	7	Ø5	10	568.5	6.5		575	5750		9.0
	8	Ø5	10	785			785	7850		12.3
	9	Ø5	77	5	118	5	128	9856		15.5
Total+10%:									90.0	40.5
V 5	1	Ø8	2	1055			1055	2110	8.3	
	2	Ø8	2	950			950	1900	7.5	
	3	Ø10	3	315			315	945	5.8	
	4	Ø16	2	65	265	20.8	351	702	11.1	
	5	Ø16	2	325			325	650	10.3	
	6	Ø12.5	2	244.1	265	16.3	325	650	6.3	
	7	Ø6.3	2	910.2			910	1820	4.5	
	8	Ø8	2	15	1055		1070	2140	8.4	
	9	Ø8	2	945.2			945	1890	7.5	
	10	Ø8	2	275			275	550	2.2	
	11	Ø10	2	265	15		280	560	3.5	
	12	Ø6.3	1	140			140	140	0.3	
	13	Ø5	10	6.5	VAR.	6.5	VAR.	2780		4.4
	14	Ø5	139	5	78	5	88	12232		19.2
	15	Ø5	16	5	118	5	128	2048		3.2
Total+10%:									83.3	29.5
V 6	1	Ø10	3	65	265.1	15	345	1035	6.4	
	2	Ø12.5	2	40	230		270	540	5.2	
	3	Ø8	3	15	265.1	15	295	885	3.5	
	4	Ø5	10	6.5	265.1	6.5	278	2780		4.4
	5	Ø5	16	5	118	5	128	2048		3.2
Total+10%:									16.6	8.4

Ø5:	0.0	162.3
Ø6.3:	18.0	0.0
Ø8:	92.5	0.0
Ø10:	119.4	0.0
Ø12.5:	50.1	0.0
Ø16:	54.8	0.0
Total:	334.8	162.3

COBRIMENTOS MÍNIMOS

LAJE E ESCADA: 2,5cm
PILAR: 2,5cm
PILAR (CONTATO COM O SOLO): 2,5cm

CONCRETO

fck = 30 MPa

AÇO: CA-50 E CA-60



ESPECIFICAÇÕES	FRANCHA
VIGAS V 1 V 2 V 3 V 4 V 5 V 6	14

RESP. TÉCNICO: Maycon Henrique Moraes Rodrigues
CREA - MT: 51648
PROPRIETÁRIO: Prefeitura Municipal de Santo Antônio de Leverger
CNPJ: 03.907.855/0001-12